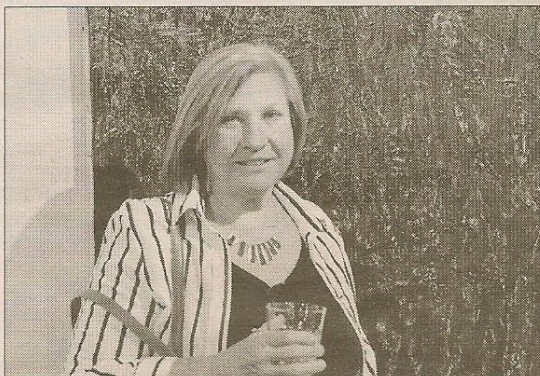


Late artists' works on display

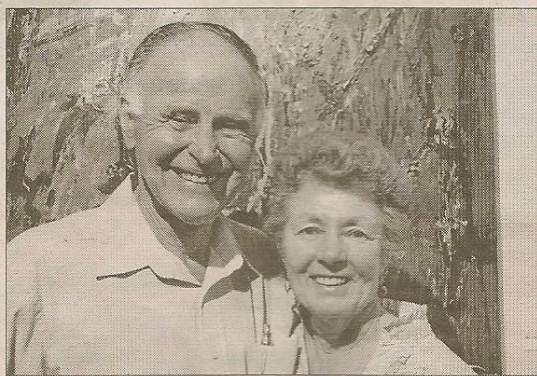
WORKS by the late Margaret Dredge, who died in September 2001, are on display at Shoalhaven City Arts Centre.

The collection launched on Saturday at the centre and will be on exhibition until May 21.

The exhibition includes examples of her paintings from works included in her first solo exhibition in 1964 at Peter Burrows Gallery through to the last two completed works from her studio.



FAVOURITE: Beverly Seaman from Bawley Point tries to pick her favourite work at the Margaret Dredge Retrospective exhibition on Saturday.



DATE DAY: John and Vera Hatton from Huskisson love the Margaret Dredge Retrospective exhibition on Saturday.



PROUD FAMILY: Margaret Dredge's granddaughters Rebecca Dredge from Melbourne with Alice McBroom and Henry Holmes from Melbourne at the Margaret Dredge Retrospective exhibition on Saturday.



SUCCESS: Peter Dredge and sister Lesley Dredge from Melbourne and artist Max Dingle from Sussex Inlet enjoy the success of the Margaret Dredge Retrospective exhibition on Saturday.



ART FANS: Heather Foster from Berry and Henry and Sue Smalkowski from Bulli enjoy the art at the Margaret Dredge Retrospective exhibition on Saturday.



REFRESHING: Alan Craven from Nowra with Debbie Grenet from Culburra Beach handle the refreshments with aplomb at the Margaret Dredge Retrospective exhibition on Saturday.